

COMMERCIAL ENERGY EFFICIENCY PROGRAM

Association of Energy Engineers
February 22, 2021



Today's Speakers

Natasha Reynolds, Georgia Power

Position:

Custom Savings Program Manager (Commercial Energy Efficiency)

Current Role:

Support the implementation of the PSC-certified energy efficiency programs offered to Georgia Power's commercial customers

Previous Roles:

Facility Energy Manager, Escambia County Government (FL)

Education:

- Bachelor of Science in Industrial Engineering, Panama's UIP
- MBA with specialization in Business Analytics, Florida State University (Spring '21)

Certifications and Industry Involvement:

- Leadership in Energy and Environmental Design (LEED) Accredited Professional with specialization in Building Design & Construction
- Certified Energy Manager
- Member of the Standard Project Committee for ASHRAE's Standard 100 Energy Efficiency in Existing Buildings



Today's Speakers

Richard Cohen, CLEAResult

Position:

Program Manager

Current Role:

Supporting the Georgia Power Commercial Energy Efficiency Programs

Previous Roles:

Energy Engineer, The Kroger Co. (GA)

Education:

- Bachelor of Arts in Applied Mathematics, St. Louis, MO
- MBA, Finance, Georgia State University, Atlanta, GA, 2010



Agenda



- Georgia Power Program Update
- Prescriptive and Custom Program Overview
- Rebate Application Process
- Project Highlights
- Contacts

PROGRAM UPDATE



Prescriptive and Custom Program Update



- Offers rebates on high-efficiency equipment installations
- 2021 is the 2nd year of the 2020–2022 program cycle
- Commercial Energy Efficiency Programs started in 2011
- 2021 Goal = 295,906 MWhs
- Rebate Budget = \$12.7 million
- Georgia Power Commercial customers only
 - Industrial customers are not eligible



- Project pre-approval requirement has been waived until further notice.
- **Pre-approval is still recommended when possible, as all projects and equipment are still subject to program pre-conditions and requirements.**
 - Prescriptive projects: Before equipment installation begins
 - Custom projects: Before equipment is purchased



PRESCRIPTIVE AND CUSTOM PROGRAM OVERVIEW



Georgia
Power

2020–2022 Equipment Categories



Prescriptive Program

- Existing Building Lighting
- New Construction Lighting
- Food Service & Grocery
- Business Equipment
- Heating & Cooling (T-stats and VFDs)
- Pumps

Custom Program

- For projects with measures that fall outside our other programs



Program Caps



Project Type	Cap per Building per Year
Any Combination of Prescriptive Rebates	\$25,000 *Capped at 50% of equipment cost
New Construction Lighting	\$25,000 *Capped at 50% of equipment cost
Outdoor Pole-Mounted Lighting	\$10,000 *Capped at 50% of equipment cost
Custom Savings	\$75,000 *Capped at 50% of project cost
Custom Chiller Plants Projects	\$250,000 per chiller plant per year *Capped at 50% of project cost

*All projects and equipment are subject to program pre-conditions and requirements.

Prescriptive Lighting



- LED Screw-in
- LED Specialty Lighting
- TLED
- LED Can Fixtures
- LED Troffers & Integrated Retrofit Kits
- LED High Bays
- LED Exit Signs
- LED Exterior Fixtures
- LED Pole-Mounted Fixtures
- Lighting Controls

Existing Building Lighting Eligibility



All lighting must be DLC or ENERGY STAR® listed.

The image displays three overlapping screenshots from the DLC and ENERGY STAR websites. The top-left screenshot shows the DLC homepage with the slogan "Bringing efficiency to light." and a search bar indicating over 265,052 qualified lighting products. The top-right screenshot shows the DLC "Select Primary Use Categories" page, listing various lighting categories such as Indoor Luminaires, Linear Replacement Lamp, and Outdoor Luminaires. The bottom screenshot shows the ENERGY STAR website, highlighting "Certified Products" and "Find and Compare Products" with a magnifying glass icon. It includes a list of steps to find products and a "CHANGE product category" button.

New Construction or Major Renovation

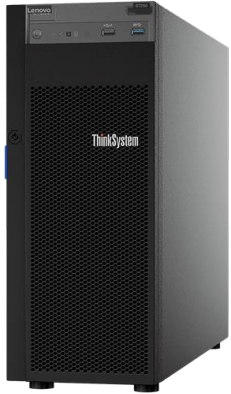


Lighting Rebates:

20% better than ASHRAE 90.1-2013
Energy Code

\$0.04/per kWh reduced
(based on ASHRAE 90.1-2013)

Other Prescriptive Measures



- Smart Thermostats & VFDs
- Servers
- PC Power Management*
- Heat Pump Water Heaters
- Food Service & Grocery Equipment
- Hotel Key Card Room Energy Control Systems*
- Commercial Door Air Infiltration Reduction*
- Irrigation & Pool Pumps*
- High Efficiency Battery Chargers*

Custom Savings



- Custom Savings Rebate is \$0.10 per kWh saved in first year
- Maximum of \$75,000 per building per year, up to 50% of project costs
- Maximum of \$250,000 per chiller plant per year, up to 50% of project costs
- Baseline efficiency is determined by current state and federal codes
- Rebates are based on verifiable energy savings calculations and cannot be based on assumed percent reductions

*Preapproval required prior to purchase and installation of equipment

Baseline Dependencies



– NEW CONSTRUCTION

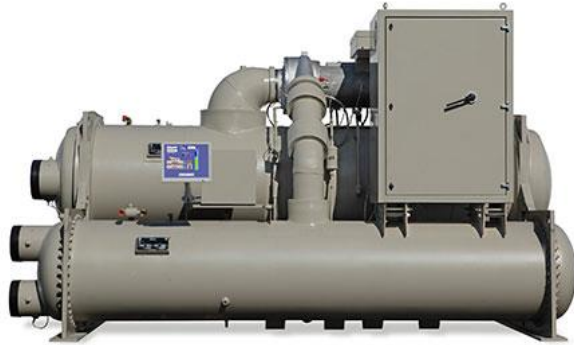
- IECC 2015, ASHRAE 90.1-2013

– EXISTING BUILDING

- Upgrades – existing equipment
- Replacements – Federal Code when applicable
- New – Federal Code, State Code when applicable



Custom Savings Eligible Equipment



Range of rebate dollars awarded per measure applied:

- Chiller Replacement, System Upgrade: \$12,000 - \$75,000
- EMS Upgrade, Replacements: \$14,000 - \$51,000
- Geothermal System Installations: \$20,000 - \$35,000
- OA Reduction Strategies: \$15,000 - \$75,000
- CRAC EC Fan Replacements: \$40,000 - \$65,000
- VRF Installations: \$ 8,000 - \$56,000

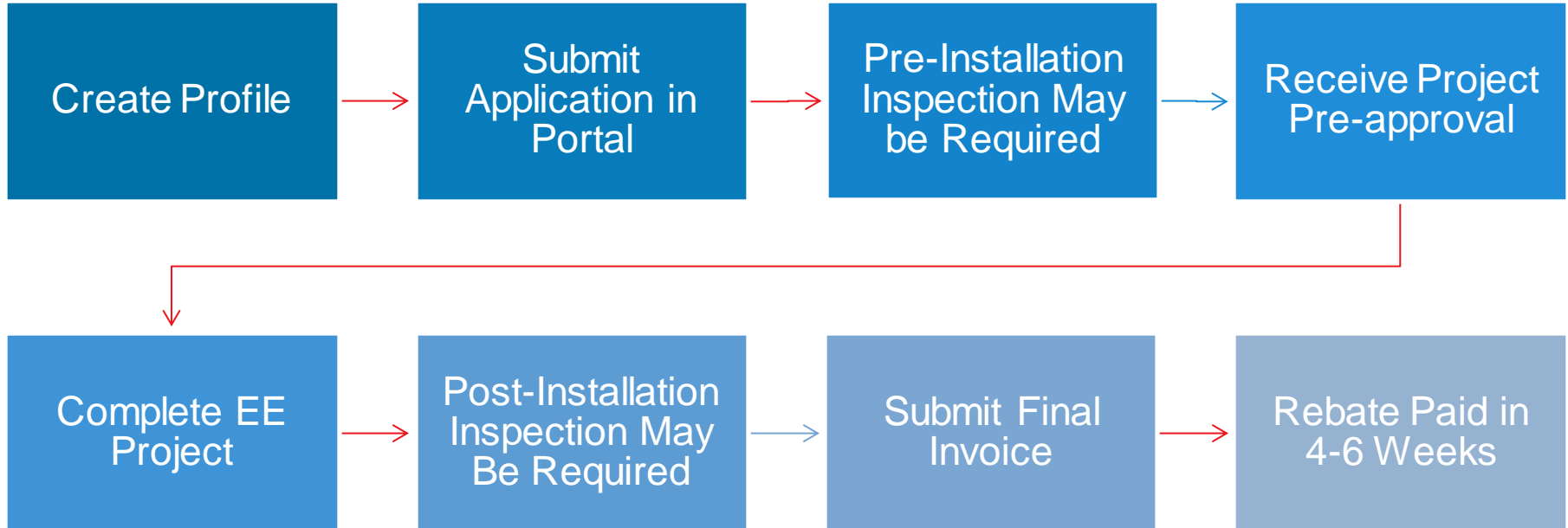
*Maximum rebate is \$75,000 per building per year up to 50% of the project cost.

REBATE APPLICATION PROCESS

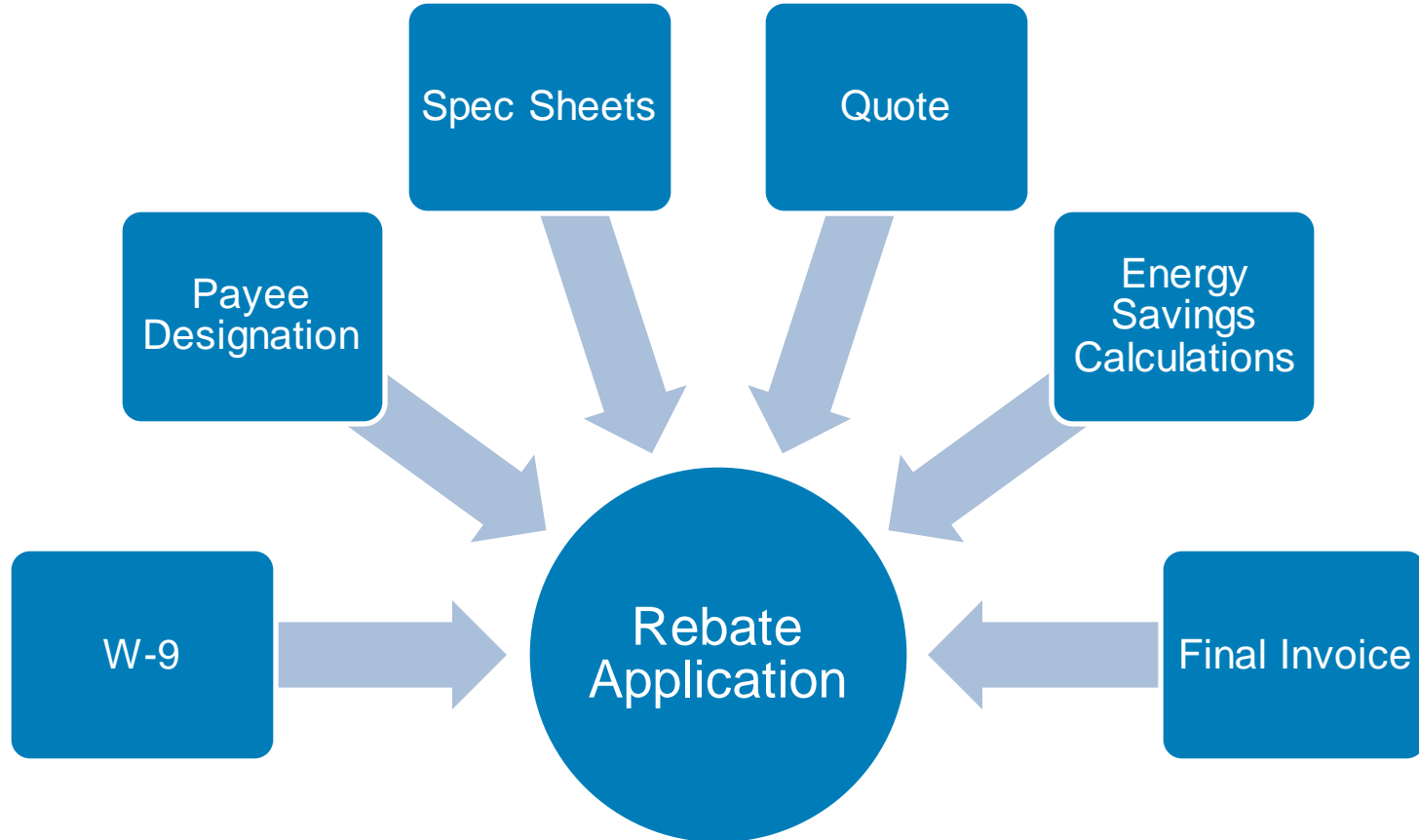


Georgia
Power

Rebate Flow Chart



Required Documentation



Rebate Portal



Rebate Application Portal available by visiting georgiapower.com/rebateapp

- Register/Log in
- Submit Application



PROJECT HIGHLIGHTS



Georgia
Power

Case Study 1 – Aquatic Center Dehumidification Project

- Building: Aquatic Center
- Project Dates: May 2020—Dec. 2020
- Existing Equipment:
 - Aquatic center dehumidification system
- Proposed Measure:
 - Airside control strategies
- Savings: 282,216 kWh
- Rebate Total: \$28,222



Case Study 2 - ASHRAE Headquarters

- Project Type: Remodel
- Project Overview:
 - Building Size:
 - » 66,700 sq. Ft.
 - Controls & HVAC related:
 - » Modulated AC HP Chiller System
 - » Demand Control Ventilation
 - » Airside Heat Recovery on DOAS
 - » Destratification Fans
 - » Radiant Panels on Ceilings
 - » HVAC pumps with VFDs
 - Prescriptive:
 - » Lighting
 - » Daylighting controls
- Baseline: ASHRAE 90.1 - 2007
- Savings: 437,343 kWh
- Rebate Total: \$36,055



New Global Headquarters

180 Technology Parkway, Peachtree Corners, GA 30092



Program Website: georgiapower.com/commercialsavings

Email: commercialsavings@southernco.com

Call Center: 1-855-762-6732

CLEAResult

Richard Cohen, Program Manager

- 404-850-4266
- richard.cohen@clearesult.com

Georgia Power

Natasha Reynolds, Program Manager

- 404-506-6874
- nareynol@southernco.com

QUESTIONS?



**Georgia
Power**